

SHOULDER SOLUTIONS



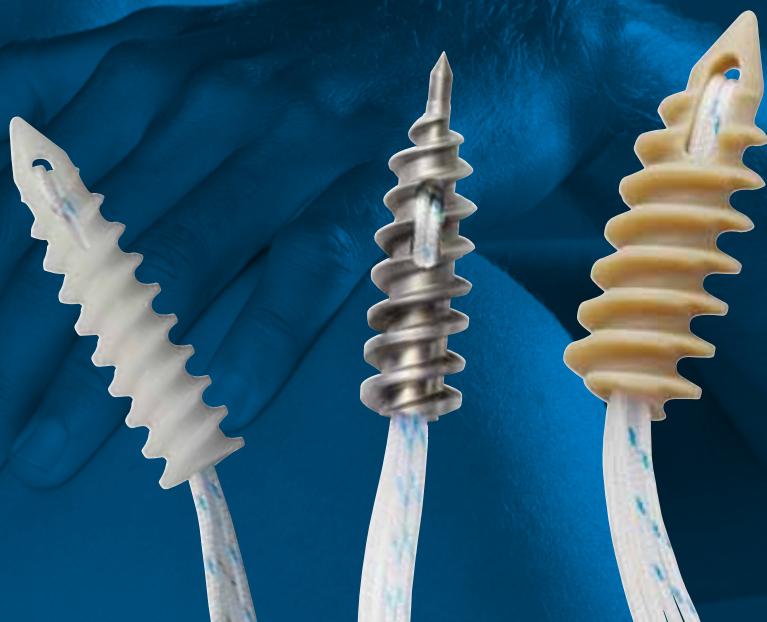
The key to shoulder arthroscopy



As the world's leader in arthroscopy, Smith & Nephew is unique in that we offer the complete range of arthroscopic technologies necessary for successful surgery. Our portfolio provides every product you need to perform subacromial decompressions, rotator cuff repairs, shoulder instability repairs and biceps tenodesis. This includes instruments for accessing the joint; cameras to see inside the joint; equipment for resecting tissue and bone; and specialized devices to repair soft tissue.

Smith & Nephew also offers education programs for practicing surgeons and medical staff, designed to help enhance your knowledge about our products and help you put innovation into practice for better outcomes.

**And you thought we
only made anchors.**



Open a world of innovation, from visualization to fixation



Unlock the potential...

With Smith & Nephew technology, you can offer a broader range of techniques

Subacromial Decompression (SAD)



DYONICS® BONECUTTER® ELECTROBLADE® Resector

- Unique product designed specifically for subacromial decompression (SAD) procedures.
- Simultaneously coagulates while cutting soft tissue to minimize bleeding, and also resects bone.
- SURILLIUM® Coating reduces blade friction and helps maintain cutting efficiency, even on hard bone.
- Available in 4.5 mm and 5.5 mm diameters.

DYONICS RF System and RF-S WHIRLWIND 90° Probe

- Performs aggressive soft tissue resection while coagulating bleeding vessels.
- Powerful high-flow suction ensures a clear field of view.
- RF probes have integrated cables, eliminating the need to purchase and sterilize reusable cables.
- RF-S WHIRLWIND 90° Probe is designed for SAD, offering aggressive ablation and high-flow suction.

DYONICS POWER II Control System

- Proprietary oscillate mode removes 85% and 108% more soft tissue than two leading competitive shavers.¹
- Powerful torque removes hard bone smoothly and is significantly faster than other systems.²

DYONICS HELICUT® Burr

- Dual-function burr provides a practical solution for resecting soft tissue and bone under the acromion.
- Unique design allows burr to rapidly abrade bone, cut soft tissue and efficiently evacuate debris through the helical inner core.
- Helical inner core of hub helps to maintain a vigorous flow for debris removal.
- Angled outer sleeve improves access to tissue and bone.

DYONICS INCISOR® Plus PLATINUM Blade

- New fortified alloy delivers consistently sharp and durable performance.³
- Tighter tolerances enable a precise, almost “scissor” like cut and concentrate the suction for effective debris removal.³
- INCISOR Plus design offers precise cutting that requires less force than equivalent competitive products.⁴

Rotator Cuff Repair



FOOTPRINT Ultra Knotless Suture Anchor

- Suture is secured inside the anchor body, independent of bone quality.
- Provides over double the holding strength and less suture slippage than leading competitor.⁵
- Available in 4.5 and 5.5 mm sizes.

TWINFIX® Ultra Suture Anchors

- Higher pullout strength than competitive products.⁶
- Great holding strength, even in poor quality bone.⁷
- Available in PEEK, PLLA/HA and titanium.
- Available with needles, with easy-to-use quick-release handle.

SPIDER2 Limb Positioner

- Reposition the arm with one press of a button placed on the operating arm – no foot pedal is required.
- Powered by cordless battery and no longer requires a connection to an air supply.

DYONICS® BONECUTTER® PLATINUM Blade

- New fortified alloy delivers consistently sharp and durable performance.³
- Tighter tolerances enable a precise, almost “scissor” like cut and concentrate the suction for effective debris removal.³
- For ease of use, two preset speeds can be defined for a single BONECUTTER blade: one for resecting soft tissue and one for bone.
- The DYONICS POWER II Control System provides the BONECUTTER blade with a special setting of 9 while on Mode 2 (Oscillate) for more aggressive bone removal.

ELITE PASS LONG BITE

Premium Arthroscopic Suture Shuttle

- Takes a large bite, up to 23 mm deep, providing convenient access to the musculotendinous junction.

¹ Data on file: ES0088.

² Data on file: ES0086.

³ Manufacturing and design claims. line extension 72203013, 72202530, 72202519.

⁴ Data on file: ES0087.

⁵ Data on file: ITR-3557.

⁶⁻⁷ 2010 data on file at Smith & Nephew: ITR-4206, ITR 4039, ITR-4018 and ITR-4091.

Rotator cuff image courtesy of Richard Friedman, MD, Charleston, SC

Shoulder Instability Repair



BIORAPTOR[®] CURVED Suture Anchors and Guide System

- Curved Drill Guides with a 25° distal bend improve the trajectory of drilling and optimize anchor placement in the glenoid.⁸
- Anchors can be placed confidently in the most inferior aspect of the glenoid, without the need to compromise the subscapularis tendon.⁹

BIORAPTOR Knotless Suture Anchor

- Suture tension is set after implantation and is independent of anchor depth.

BIORAPTOR[®] 2.3 PK Suture anchor

- Exceptional pullout strength.¹⁰
- Made from radiolucent high strength PEEK-OPTIMA[®] polymer from Invibio[®].
- Cannulated obturator allows physician to perform the procedure percutaneously.

OSTEORAPTOR[®] 2.3 & 2.9 Suture Anchors

- Bioabsorbable anchor that incorporates hydroxyapatite (HA), a natural bone mineral.
- HA provides a consistent degradation cycle by neutralizing acidity, allowing higher strength retention over time.¹¹

ACCU-PASS[®] Disposable Suture Shuttle

- Thumb-wheel allows easy one-handed operation.
- Dependably sharp with multiple tip configurations.

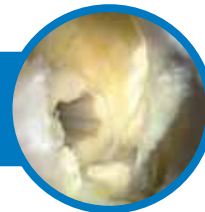
4.5 mm SYNOVATOR[®] Blade with Full Radius Inner BONECUTTER[®] Blade

- SYNOVATOR[®]-style outer window is designed to provide less-aggressive soft-tissue resection in the joint.
- BONECUTTER[®]-style inner cutting blade allows preparation of bone prior to soft tissue re-attachment.
- Two blades in one: resects soft tissue and bone with a single blade.

CLEAR-TRAC[®] Disposable Scope Shaver Cannula

- J-Lock allows you to swap the scope and shaver between the anterior and posterior portals without re-introducing the cannula.
- Double-seal design cannula contains a seal that dramatically reduces fluid leakage during passage of instruments and sutures.

Biceps Tenodesis



BICEPTOR[®] TENODESIS System

- Fewer procedural steps mean more efficient use of the surgeon's time.
- No whipstitching of the tendon allows for a sutureless repair.
- Ability to cut the tendon in the last step means less guesswork and more control over tensioning.
- Allows for an arthroscopic or mini-open procedure, providing the surgeon more options.

⁸ Data on file, ITR-15001065, 2011

⁹ Data on file, ITR-4616, 2011

¹⁰ Data on file: ITR 3034 and 3061, 2004.

¹¹ Agrawal CM, Athanasiou KA. Technique to control pH in vicinity of biodegrading PLS-PGA implants. J Biomed



Endoscopy

Smith & Nephew, Inc.
150 Minuteman Road
Andover, MA 01810 USA

www.smith-nephew.com

T +1 978 749 1000
US Customer Service: +1 800 343 5717
International Customer Service +1 978 749 1140

*Trademarks of Smith & Nephew. Certain marks Reg.
US Patent and Trademark Office. All Trademarks
acknowledged. ©2011 Smith & Nephew. All rights
reserved. Printed in USA. 07/11 10600567 Rev B